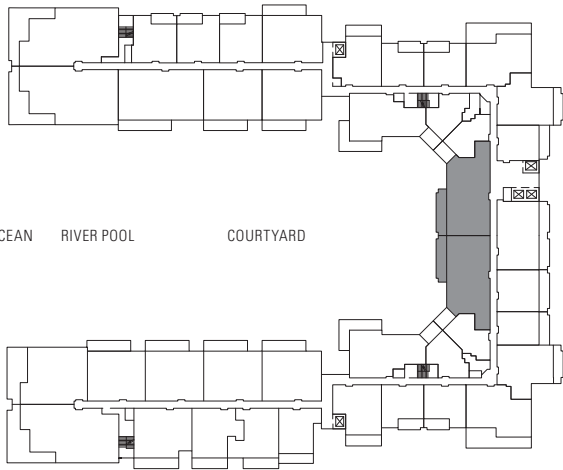
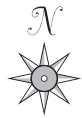
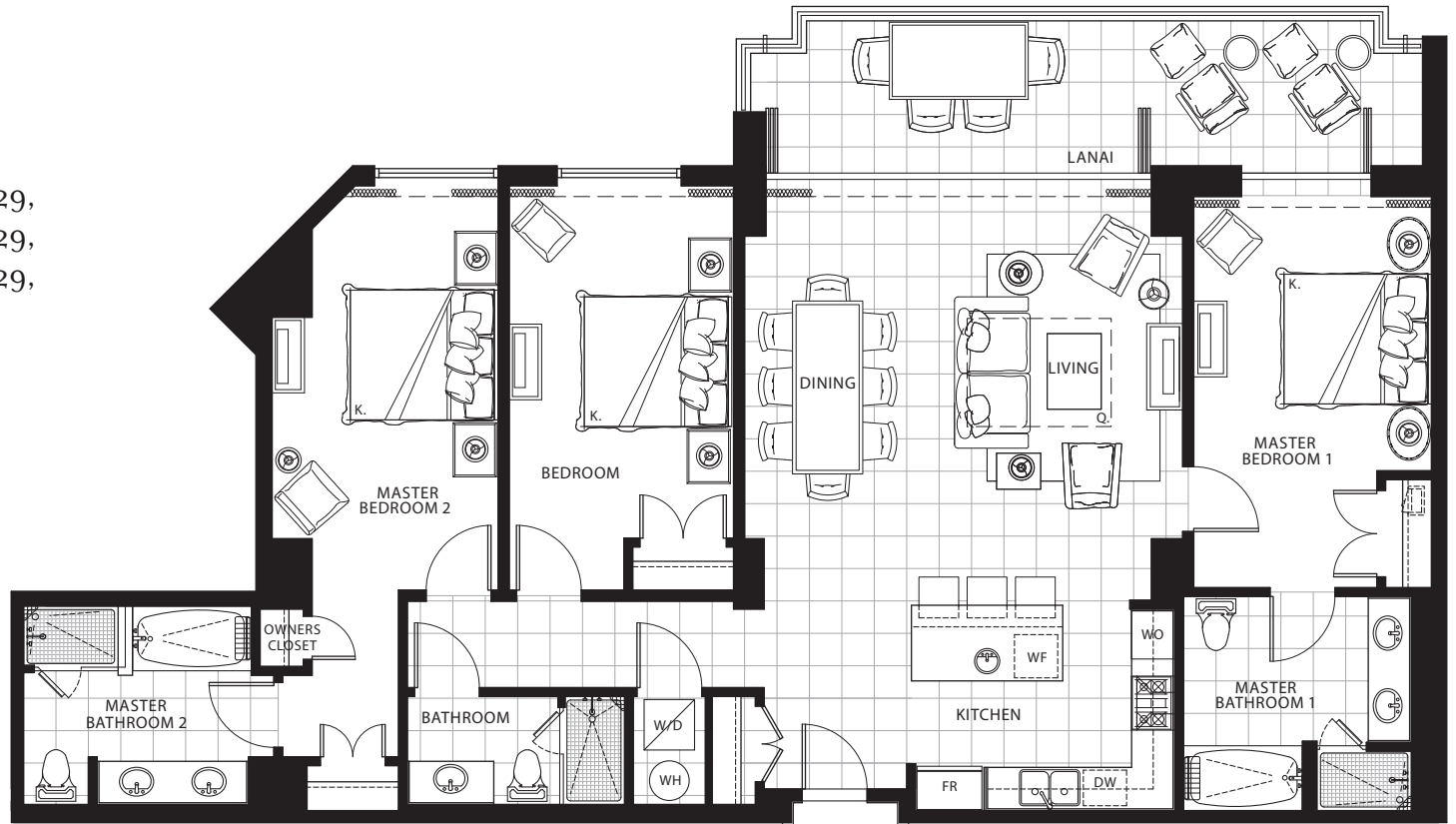


# THREE BEDROOM Plan D1-R

1,610 sq. ft. Interior

225 sq. ft. Lanai

Residences: 325, 329, 425, 429,  
525, 529, 625, 629,  
725, 729, 825, 829,  
925, 929



BEACH/OCEAN RIVER POOL COURTYARD

MOUNTAIN VIEW

Subject to change. Developer reserves the right to make changes and modifications at any time without notice.



**HONUA KAI**  
KONEA ENCLAVE

# THREE BEDROOM

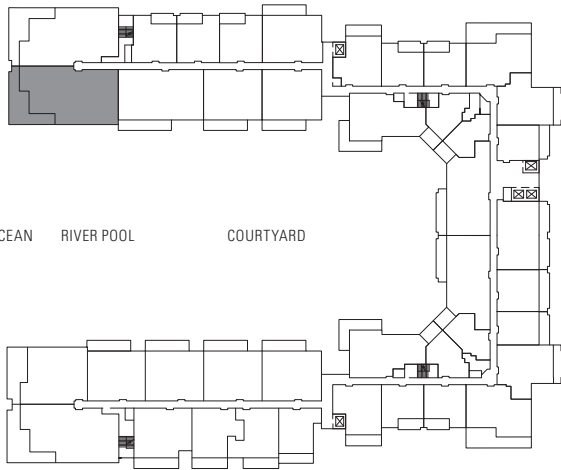
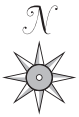
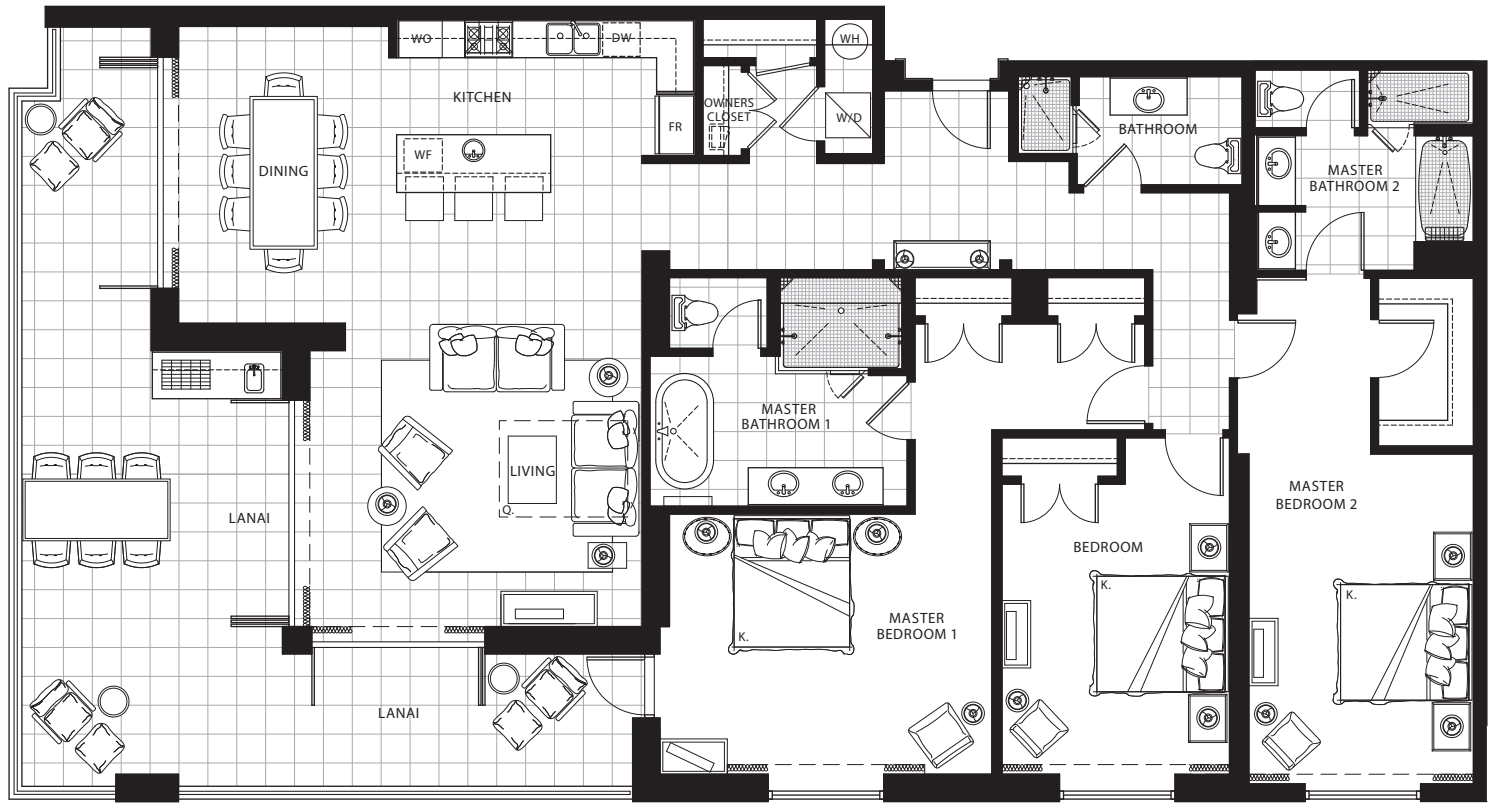
## Plan D2 L-R

2,280 sq. ft. Interior

1,430 sq. ft. Lanai\*

Residence: 151

\* Includes landscaped lanai area (not shown)



BEACH/OCEAN RIVER POOL COURTYARD

MOUNTAIN VIEW

Subject to change. Developer reserves the right to make changes and modifications at any time without notice.



**HONUA KAI**  
KONEA ENCLAVE

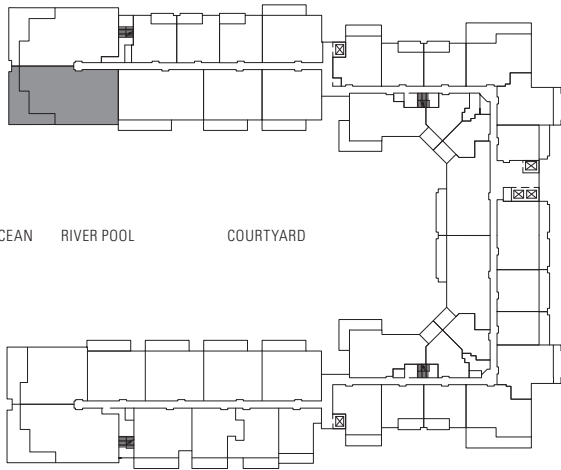
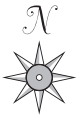
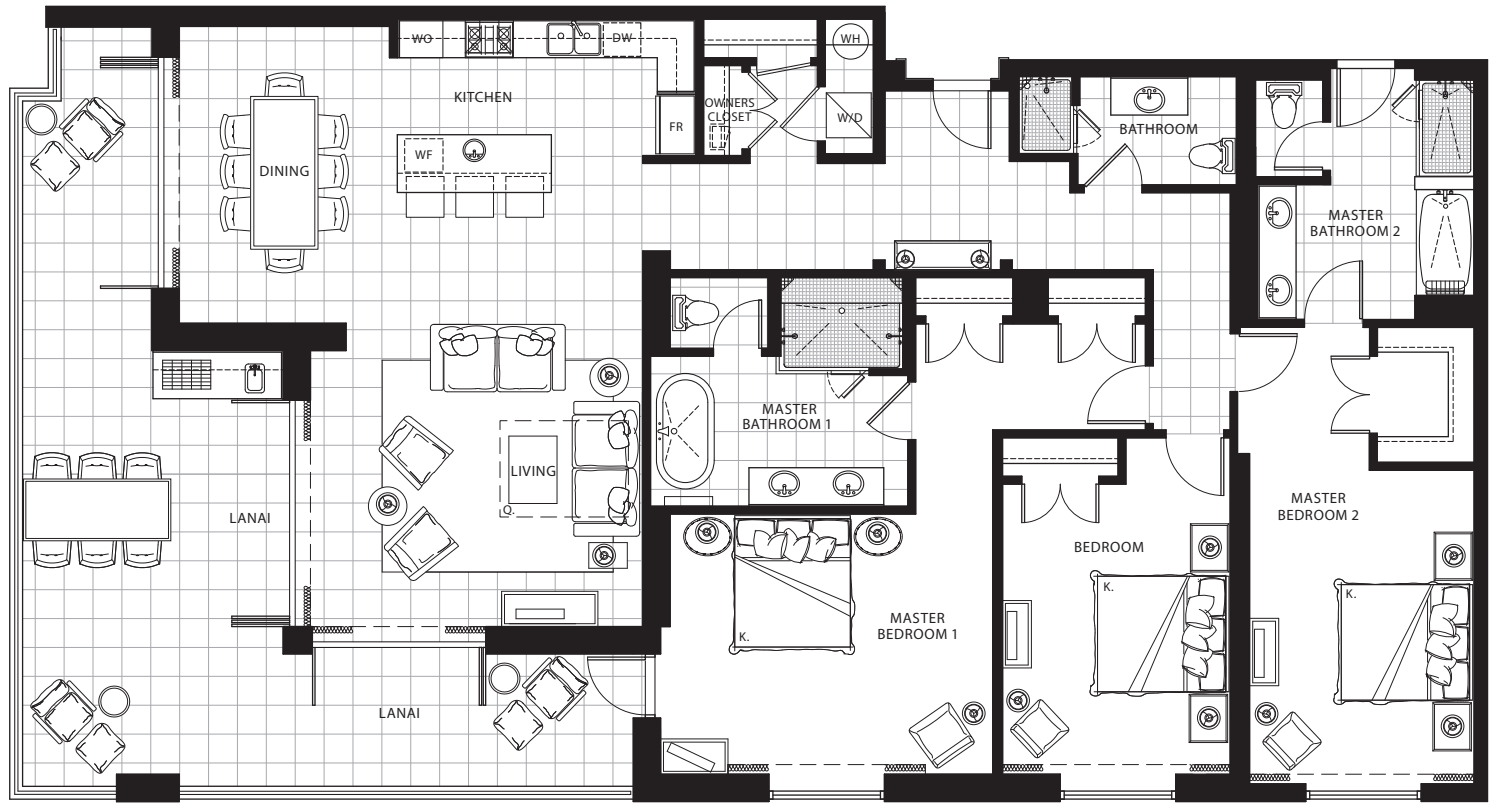
# THREE BEDROOM

## Plan D2 XI-R

2,280 sq. ft. Interior

600 sq. ft. Lanai

Residences: 25I, 35I,  
45I, 55I



BEACH/OCEAN RIVER POOL COURTYARD

MOUNTAIN VIEW

Subject to change. Developer reserves the right to make changes and modifications at any time without notice.

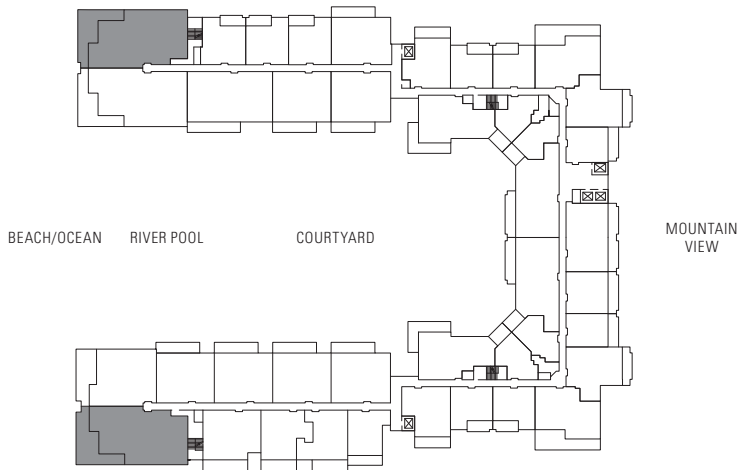
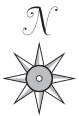
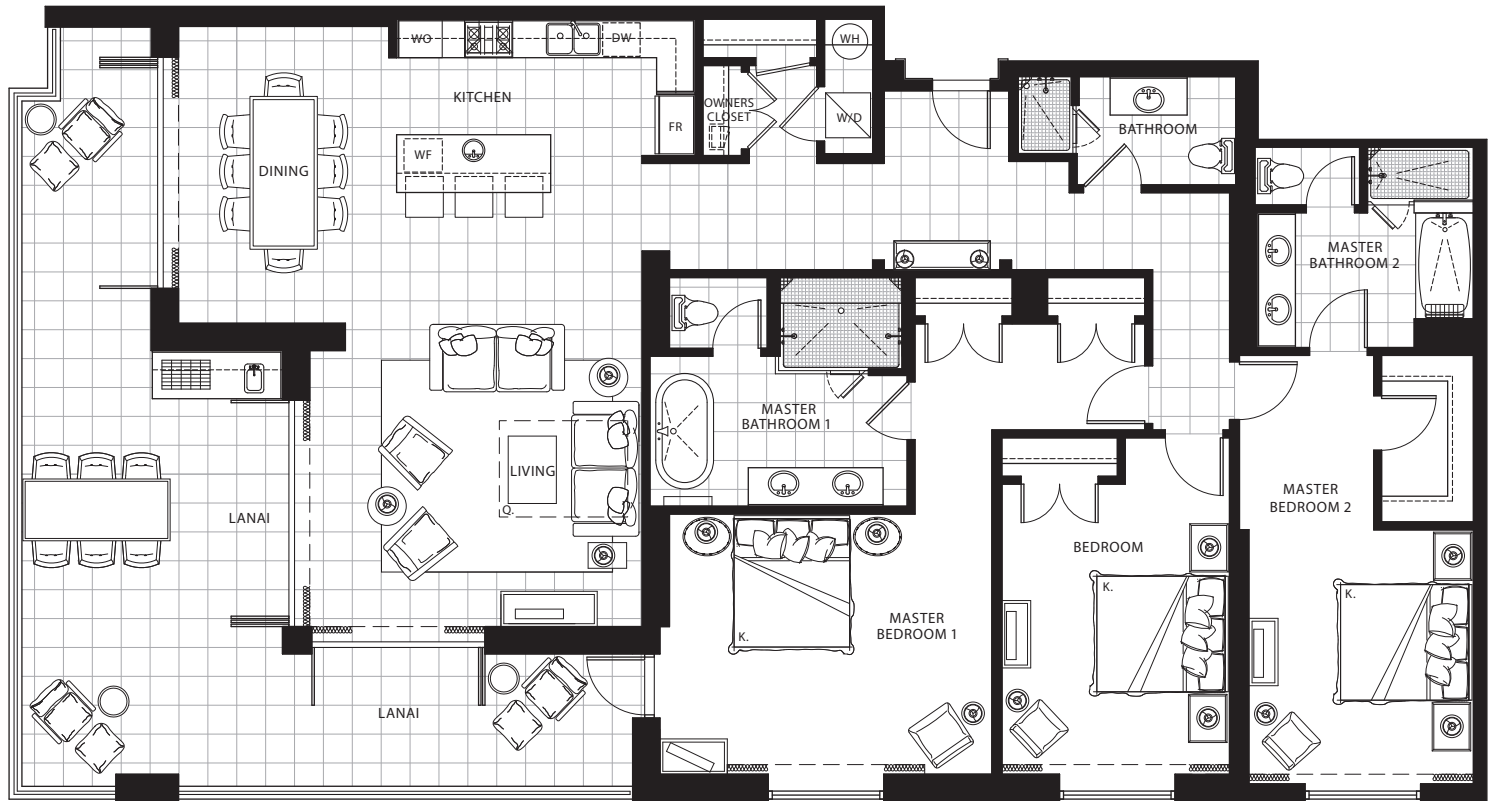


**HONUA KAI**  
KONEA ENCLAVE

# THREE BEDROOM Plan D2a L-R

2,230 sq. ft. Interior  
Residence: 102  
1,310 sq. ft. Lanai\*  
Residence: 150  
1,360 sq. ft. Lanai\*

\*Includes landscaped lanai area (not shown)



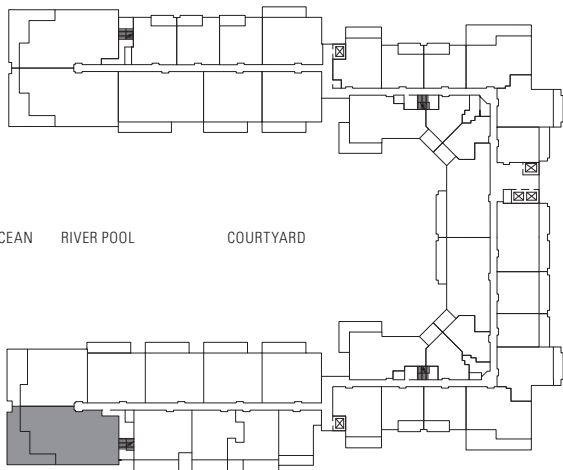
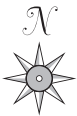
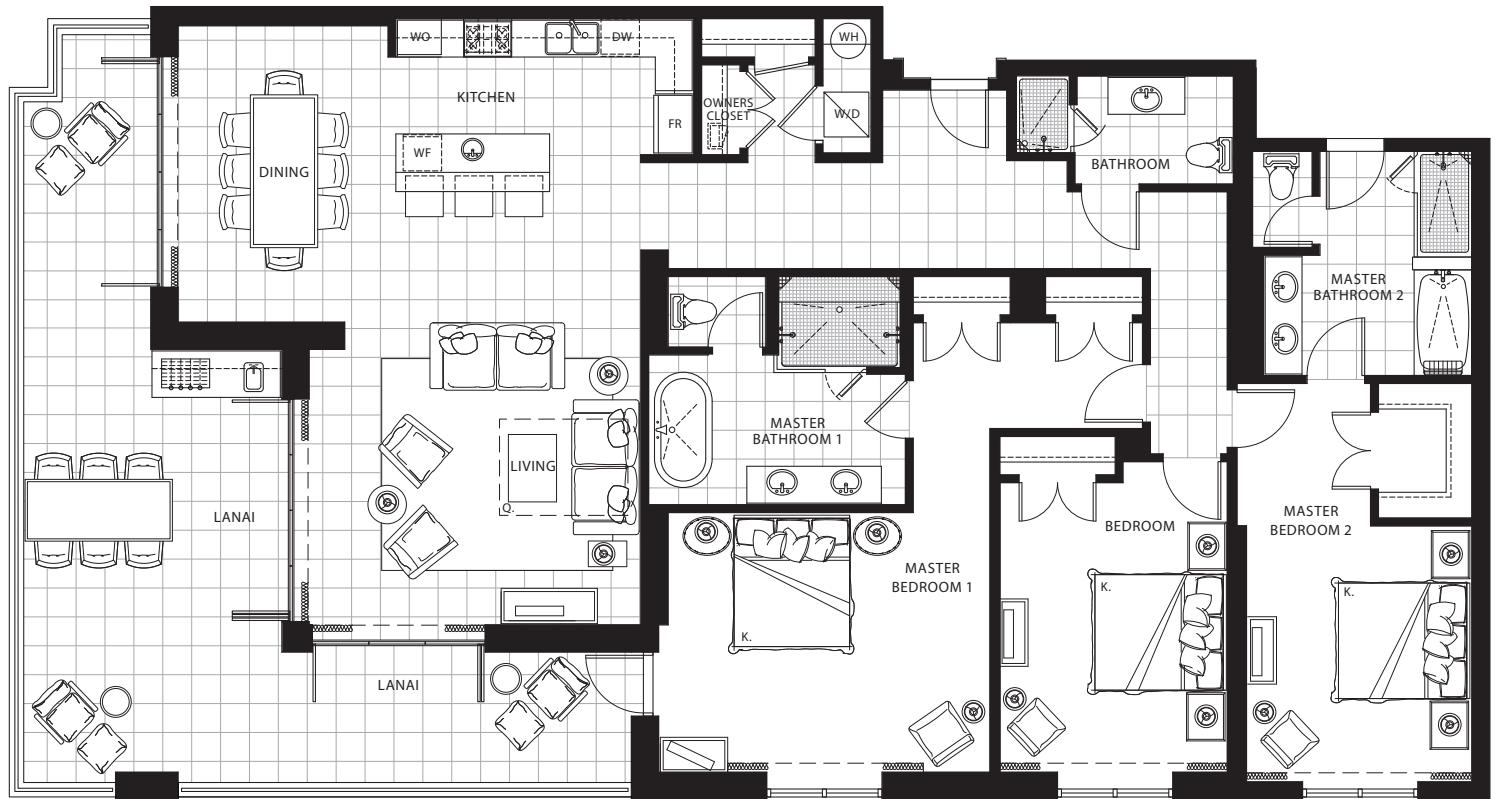
Subject to change. Developer reserves the right to make changes and modifications at any time without notice.

# THREE BEDROOM Plan D2a XL-R

2,230 sq. ft. Interior

600 sq. ft. Lanai

Residences: 202, 302,  
402, 502



BEACH/OCEAN RIVER POOL COURTYARD

MOUNTAIN VIEW

Subject to change. Developer reserves the right to make changes and modifications at any time without notice.



**HONUA KAI**  
KONEA ENCLAVE

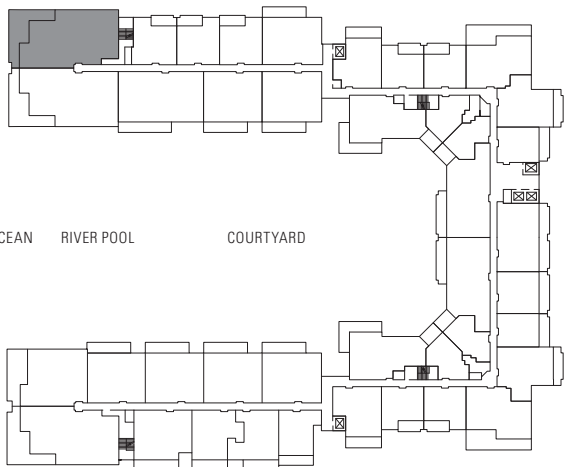
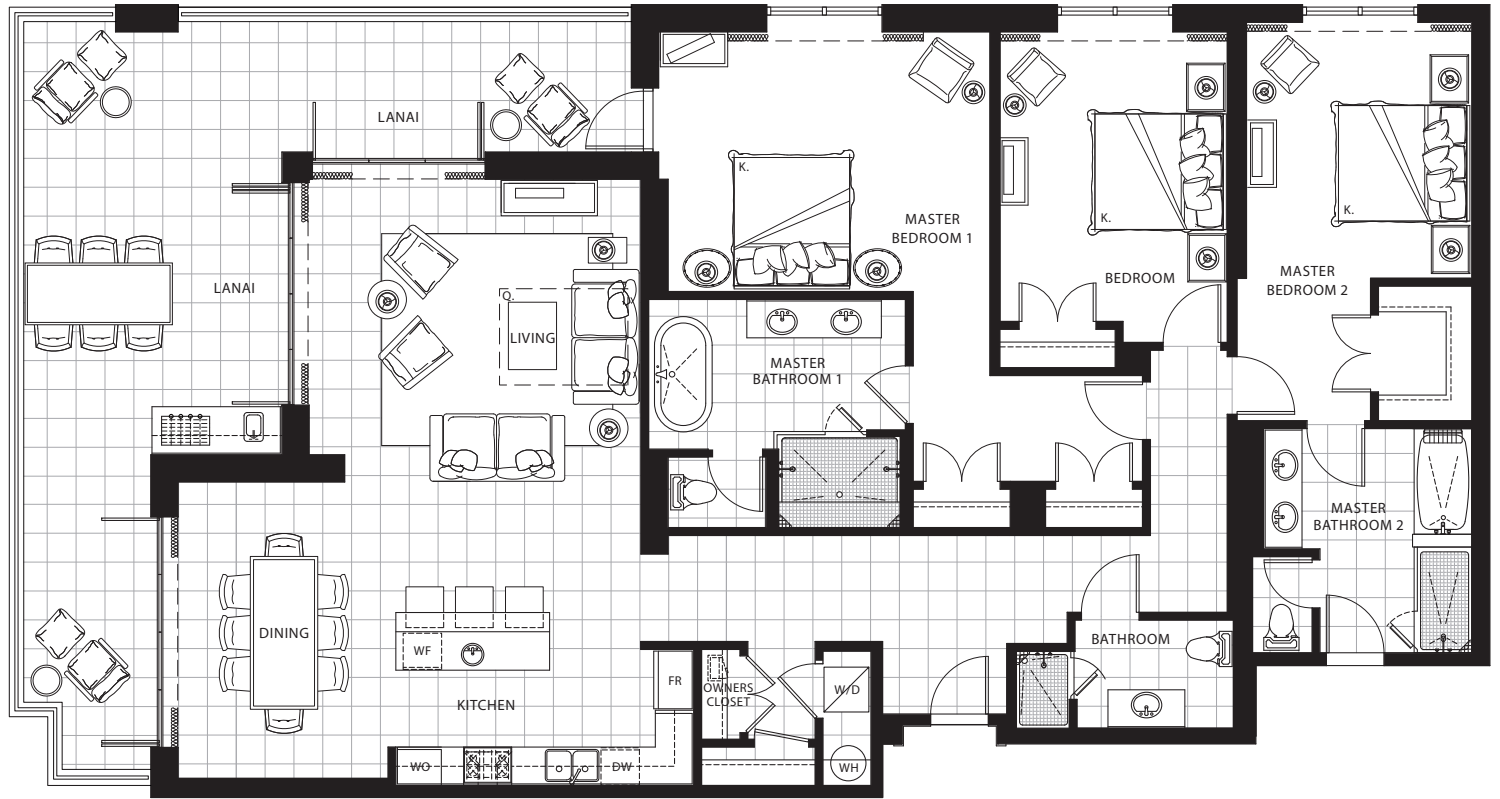
# THREE BEDROOM

## Plan D2 XLi-R

2,230 sq. ft. Interior

600 sq. ft. Lanai

Residences: 250, 350,  
450, 550



BEACH/OCEAN RIVER POOL COURTYARD

MOUNTAIN VIEW

Subject to change. Developer reserves the right to make changes and modifications at any time without notice.

# THREE BEDROOM

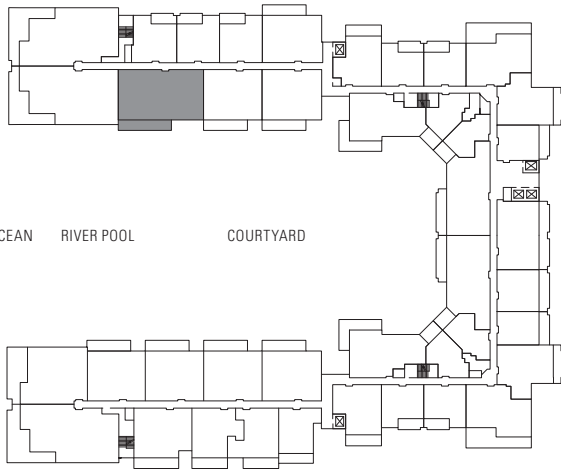
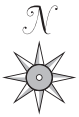
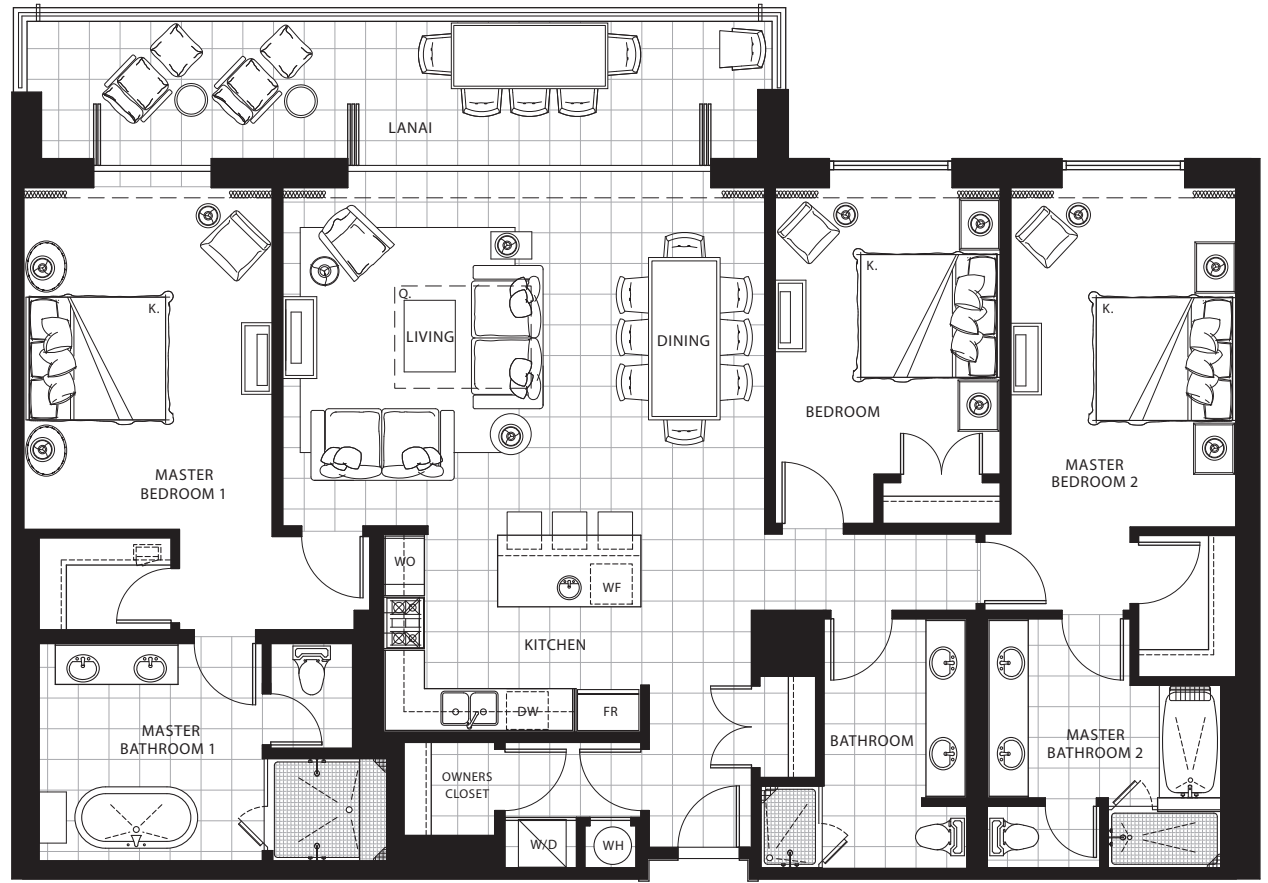
## Plan D3-R

1,930 sq. ft. Interior

270 sq. ft. Lanai

Residences: 149\*, 249, 349, 449,  
549, 649, 749

\* Lanai area larger than noted



BEACH/OCEAN RIVER POOL COURTYARD

MOUNTAIN VIEW

Subject to change. Developer reserves the right to make changes and modifications at any time without notice.

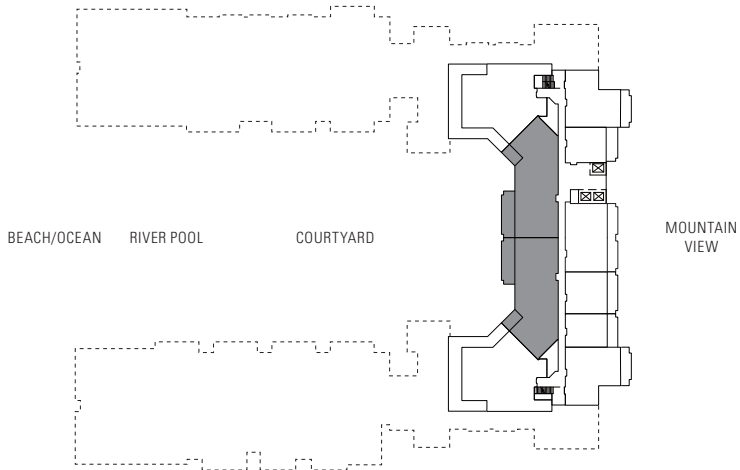
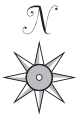
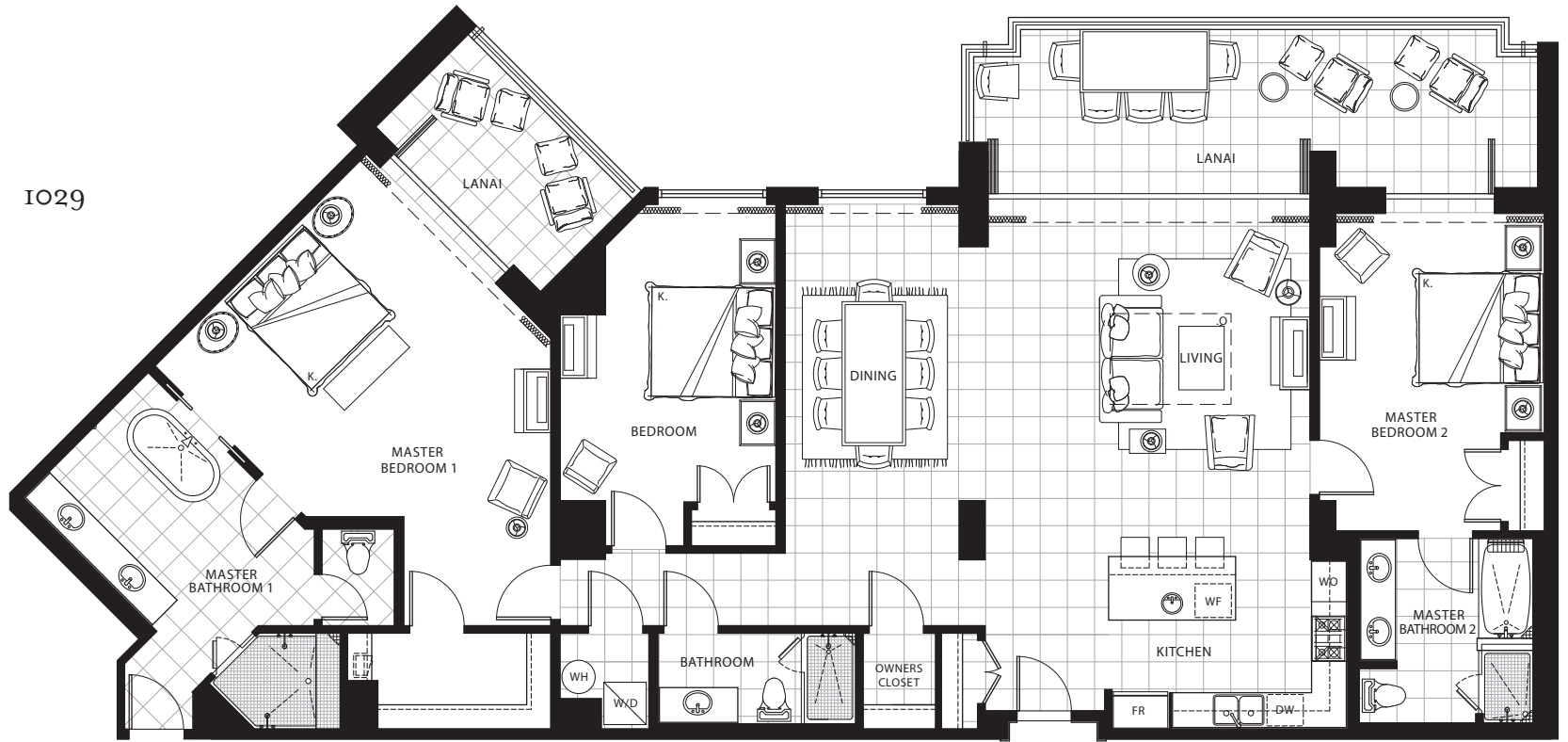
# THREE BEDROOM

## Plan D4-R

2,170 sq. ft. Interior

400 sq. ft. Lanai

Residences: 1025, 1029



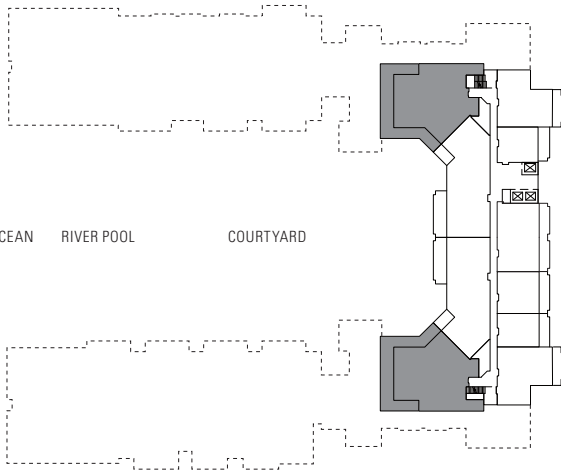
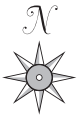
Subject to change. Developer reserves the right to make changes and modifications at any time without notice.

# THREE BEDROOM Plan D5-R

2,380 sq. ft. Interior

890 sq. ft. Lanai

Suite: 1019, 1033



BEACH/OCEAN RIVER POOL COURTYARD

MOUNTAIN VIEW

Subject to change. Developer reserves the right to make changes and modifications at any time without notice.



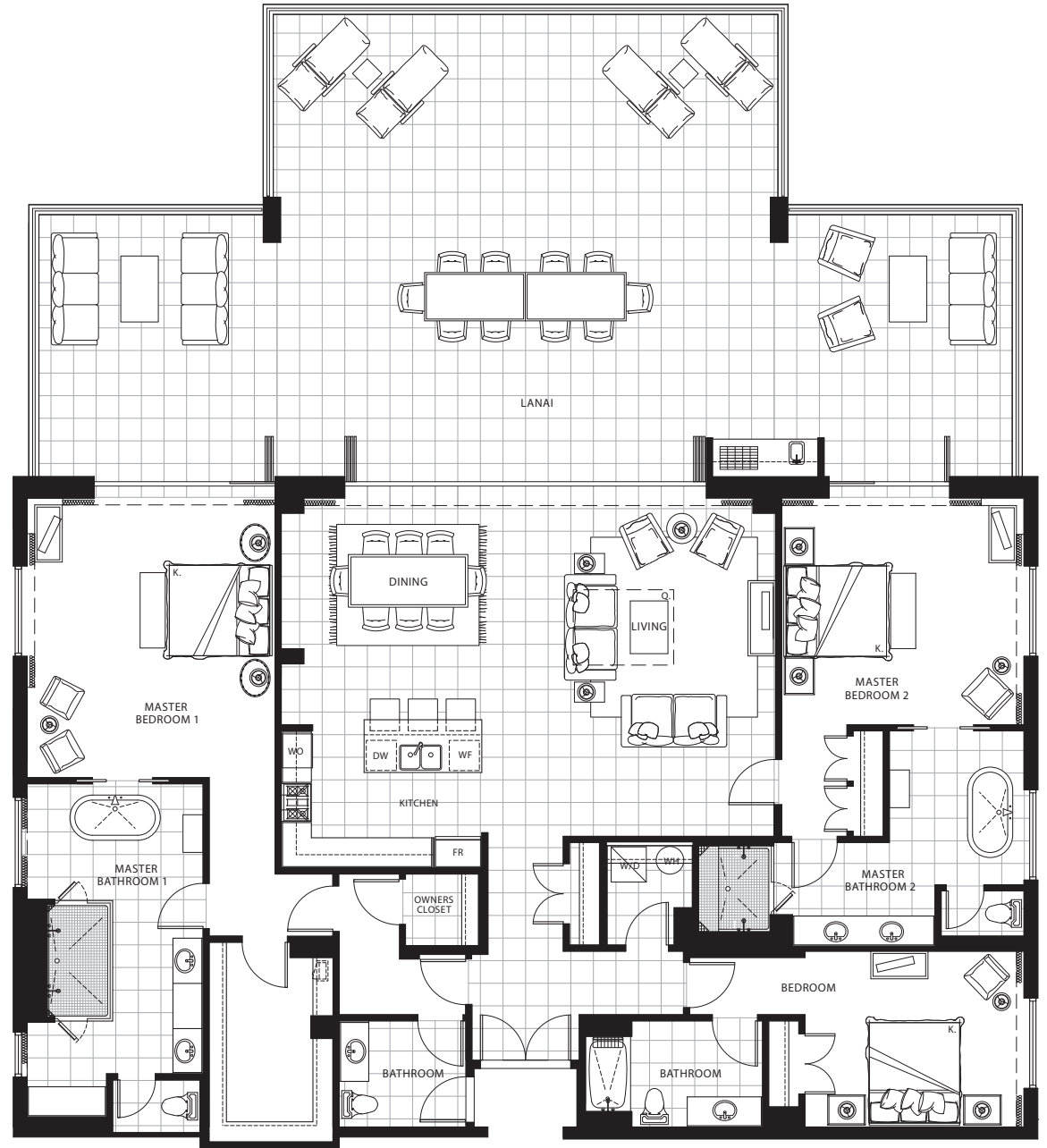
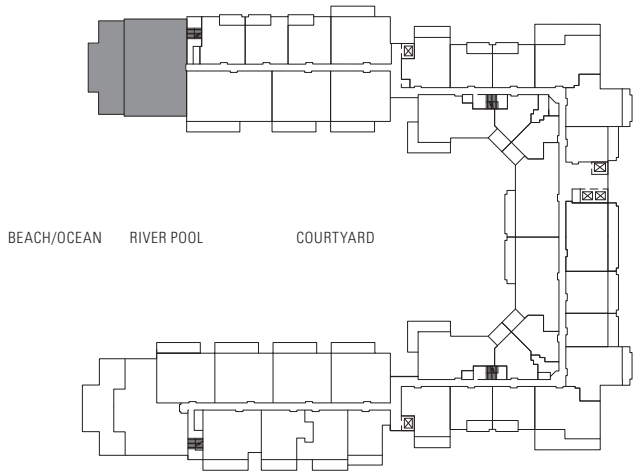
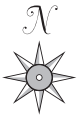
**HONUA KAI**  
KONEA ENCLAVE

# THREE BEDROOM Plan E1-R

2,770 sq. ft. Interior

1,670 sq. ft. Lanai

Residence: 651



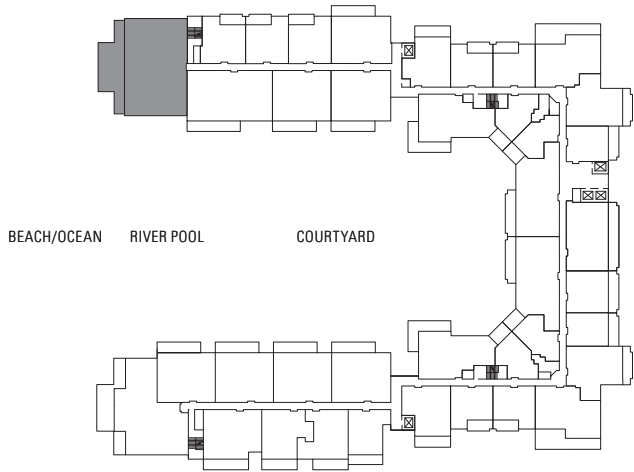
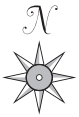
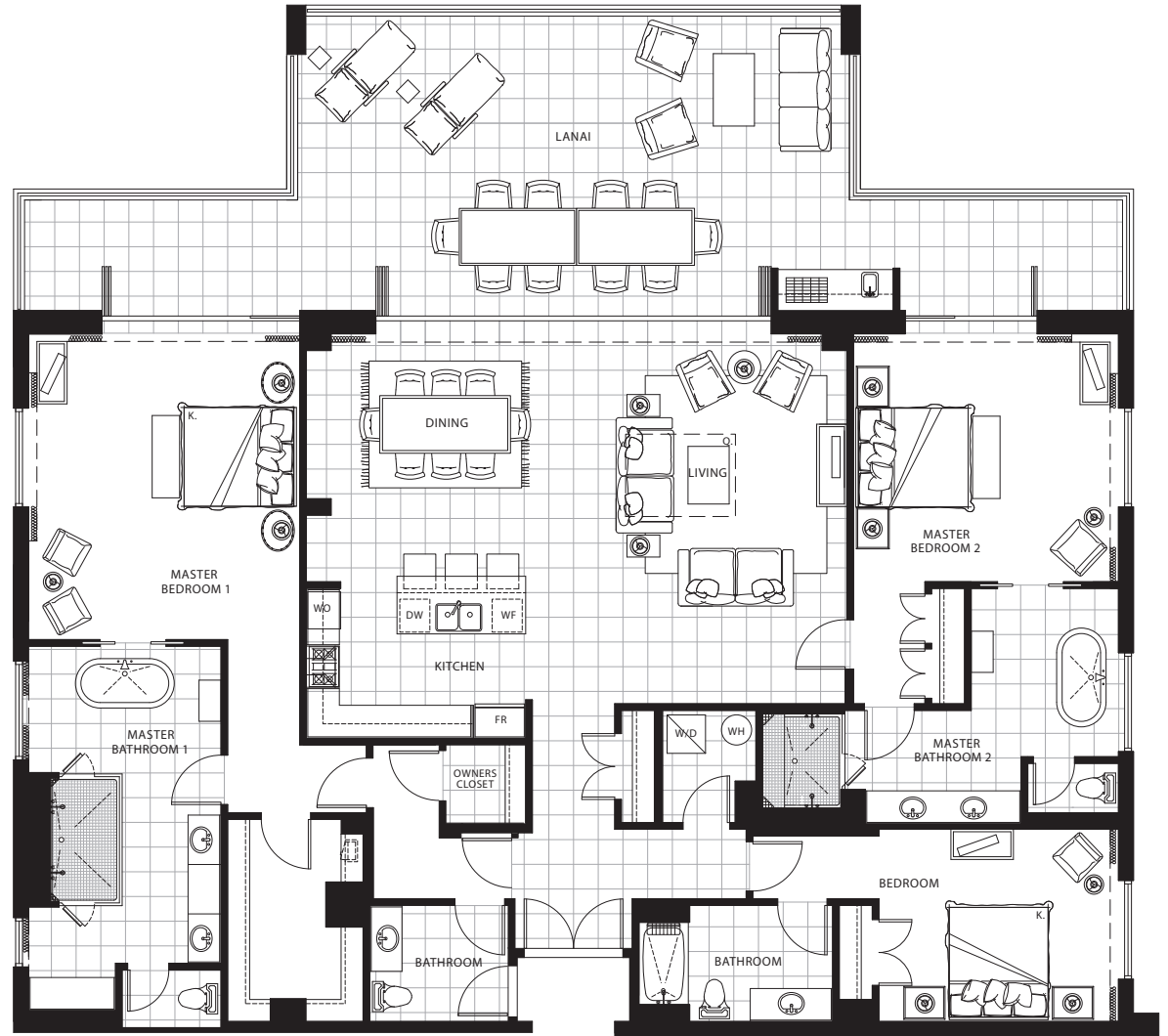
Subject to change. Developer reserves the right to make changes and modifications at any time without notice.

# THREE BEDROOM Plan E1a-R

2,770 sq. ft. Interior

905 sq. ft. Lanai

Residence: 751



BEACH/OCEAN RIVER POOL COURTYARD

MOUNTAIN VIEW

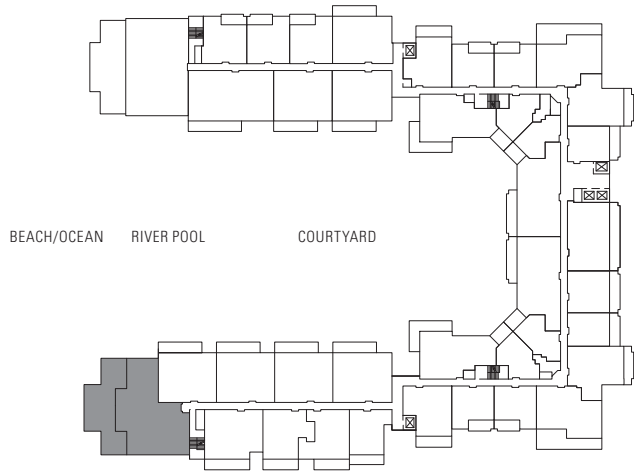
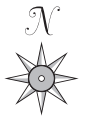
Subject to change. Developer reserves the right to make changes and modifications at any time without notice.



**HONUA KAI**  
KONEA ENCLAVE

# THREE BEDROOM Plan E2-R

2,365 sq. ft. Interior  
1,375 sq. ft. Lanai  
Residence: 601



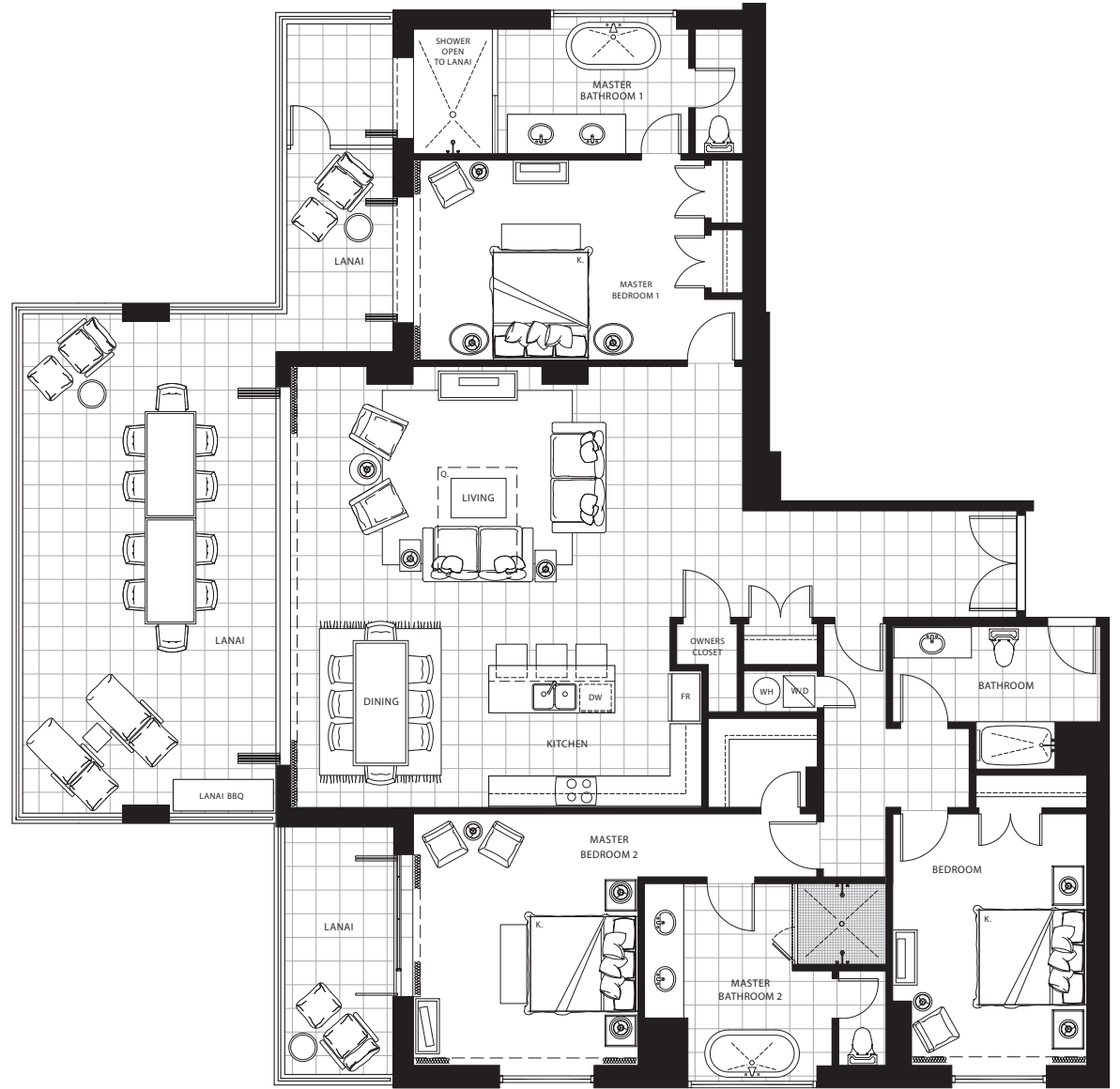
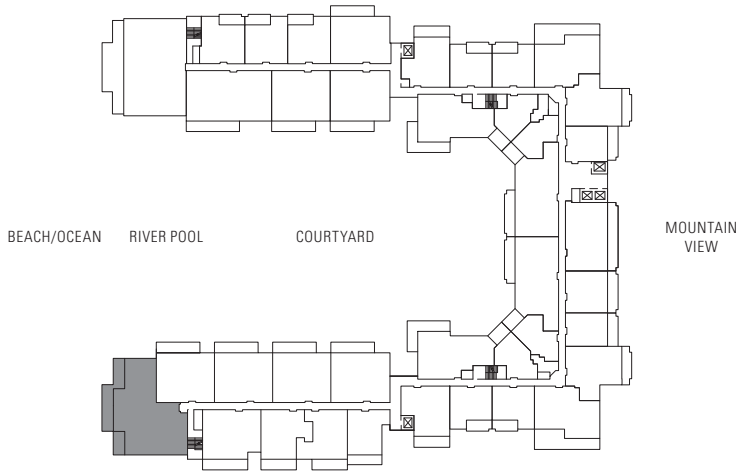
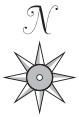
Subject to change. Developer reserves the right to make changes and modifications at any time without notice.

# THREE BEDROOM Plan E2a-R

2,365 sq. ft. Interior

850 sq. ft. Lanai

Residence: 701



Subject to change. Developer reserves the right to make changes and modifications at any time without notice.