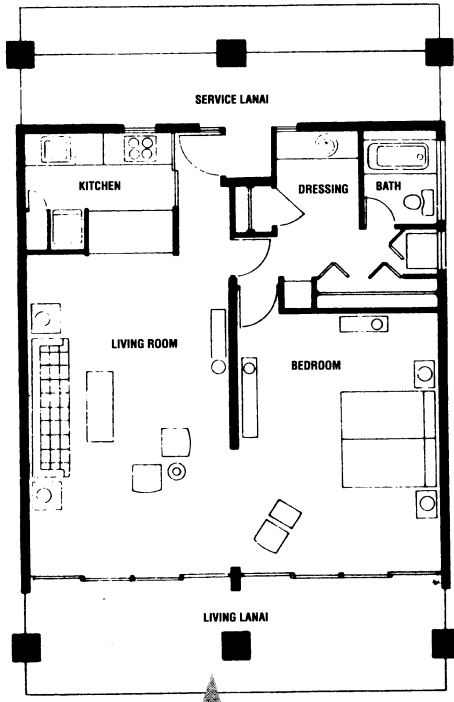


**Maui Kaanapali Villas**  
Typical Studio —

(Approximately 600 square feet)

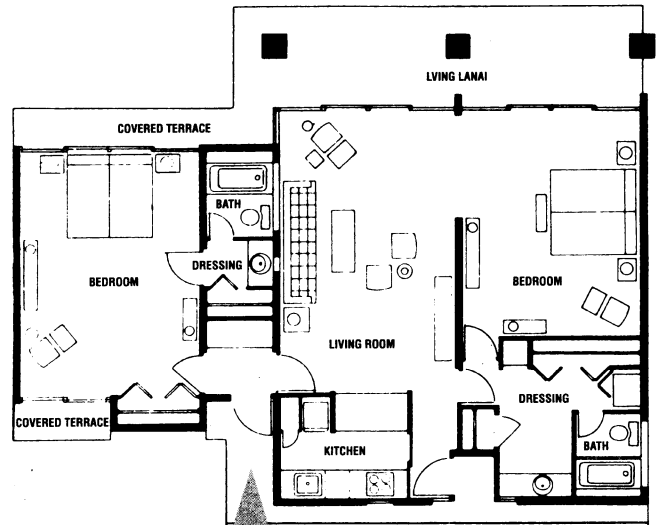


**Maui Kaanapali Villas**  
Typical One Bedroom Apartment —

(Approximately 1000 square feet)



**Maui**  
**Kaanapali**  
VILLAS



**Maui Kaanapali Villas**  
Typical Two Bedroom Apartment —

(Approximately 1700 square feet)

**UNIT DESCRIPTION**

**UNIT DESIGNATION**

Qty	Type Unit Br./Bath	Living Area	Gross Area
4	3.2	1,700	2,142
4	2/2	1,313	1,637
32	1/1	920	1,101
24	Studio	544	589
8	2/2	1,325	1,754
5	1/1	920	1,218
6	Studio	544	589
8	Studio	544	589
58	1/1	920	1,010
10	2/2	1,325	1,754
2	2/2	1,325	2,880
6	1/1	920	1,010
1	3/2	1,699	2,562
1	2/2	1,321	2,332
1	2/2	1,425	3,060
1	2/2	1,376	2,506
4	Studio	544	589

- 01
- 02
- 03--06, -15--18
- 07--12
- 14, -19
- #A106, #A115-A118
- #A107-A112
- #B109-B112, #B209-B212
- #B102-B107, #B202-B207, #C102-C110, #C202-C210,
- #D102-B107, #D202-D207, #E101-E108, #E201-E208
- #B101, #B108, #B114, #B201, #B208, #B214, #C101,
- #C210, #D101, #D201
- #A114, #A119
- #P3, P4, P5, P11, P12, P14
- #P1
- #P2
- #P10
- #P15
- #P6-P9

ASK FOR THE BEST



**Whalers**  
**Realty Inc.**

**Whalers Realty Inc.**

Whalers Village, Suite A3 • 2435 Kaanapali Parkway • Maui, Hawaii 96761  
Hawaii (808) 661-8777 • Toll Free (800) 367-5632 • Fax (808) 661-8951  
e-mail: sales@whalersrealty.com • web site: <http://www.whalersrealty.com>